




PERMATA HIJAU
SUITES

Living in Perfect Harmony

PRODUCT KNOWLEDGE

2021





Surround Yourself With The Dreamers, and The Doers, The Believers, and Thinkers...

but most of all, surround yourself with
those who see the greatness within you,
even when you don't see it yourself.

Edmund Lee



Welcome Home

Permata Hijau Suites



PERMATA HIJAU
S U I T E S



Impressive Panoramic City View

Permata Hijau Suites



It's All Start Within Your Community, Family, and Friends

Permata Hijau Suites, South Jakarta
–Sexiest and Boldest” Brand New Project
Available in 2020’s New Normal Era. One
True Living Space with Living in Perfect
Harmony Concept.

Your Very Own World-Class Neighbourhood
to Live, Work, Play and Learn

Permata Hijau Suites



PERMATA HIJAU
S U I T E S



#nyatadekatnya

Exquisite Tenant Profile

Professionals with global minds that work in other countries and also expatriates. Truly an international neighborhood to live.

Linked to 21 countries.

Indonesian Diaspora :

- Thailand
- Vietnam
- Philippine
- Singapore
- Germany
- UAE
- Czechoslovakia
- Malaysia
- Japan
- China
- Netherland
- Australia
- Canada

Expatriate from :

- French
- Italy
- Australia
- England
- Spain
- Japan
- Serbia
- Netherland
- Germany
- Turkey
- Russia
- USA

Who Is Your Neighbour ?

- Professionals with global minds connected to 20 countries.
- 53% executive millenials, work and own business around Jakarta's busiest business district.
- Talented creative people from unicorn startups.





It Starts Here!

It all starts within your very own neighbourhood, the CREATIVE ECOSYSTEM where millennials, talented startups people, young global minds live. A sanctuary to connect and share ideas, to create **“the extraordinary future”**.

With such an amazing world-class communities gathered in one place, Permata Hijau Suites will be the NEXT INCUBATOR for creators, creative people, business owners, and startup unicorns.



Enjoy Your Time Even More

Permata Hijau Suites sits in the center of Jakarta's prestigious neighborhood, the Permata Hijau area in South Jakarta. Make it virtually accessible from any directions. Traveling time into the bustling Jakarta city won't be an issue... simply enjoy your time one more hour before you leave everyday.

Harmonize your time, harmonize your life...

#nyatadekatnya



“Stay @Home”

Has a New Meaning

Covid-19 Pandemic and social distancing have a new meaning to your home. It is not merely a place to linger with your family and loved ones. It is now a creative haven where you can live, work, play, learn, and do more in the same place.

Permata Hijau Suites offers the best solution for this new way of life. Spend your exciting day within premises, with more than 45 amenities available.

You can also choose between a compact unit or an expandable living space...it is all available right here at your doorstep.





**EASY ACCESS TO
PERMATA HIJAU SUITES**

Easy Multiple Access

**2,1 KM — TOLL KEBON
JERUK**

**4,2 KM — TOLL DALAM
KOTA** (Toll S.Parman / Cawang Grogol)

**6 KM — TOLL JORR
(JOGLO)**



Nearby Lifestyle & Commercial Area

1,5 KM — MULIA Hotel

2,0 KM — GBK

2,6 KM — JCC

2,5 KM — SENAYAN & SUDIRMAN

3,5 KM — SEMANGGI & PACIFIC
PLACE

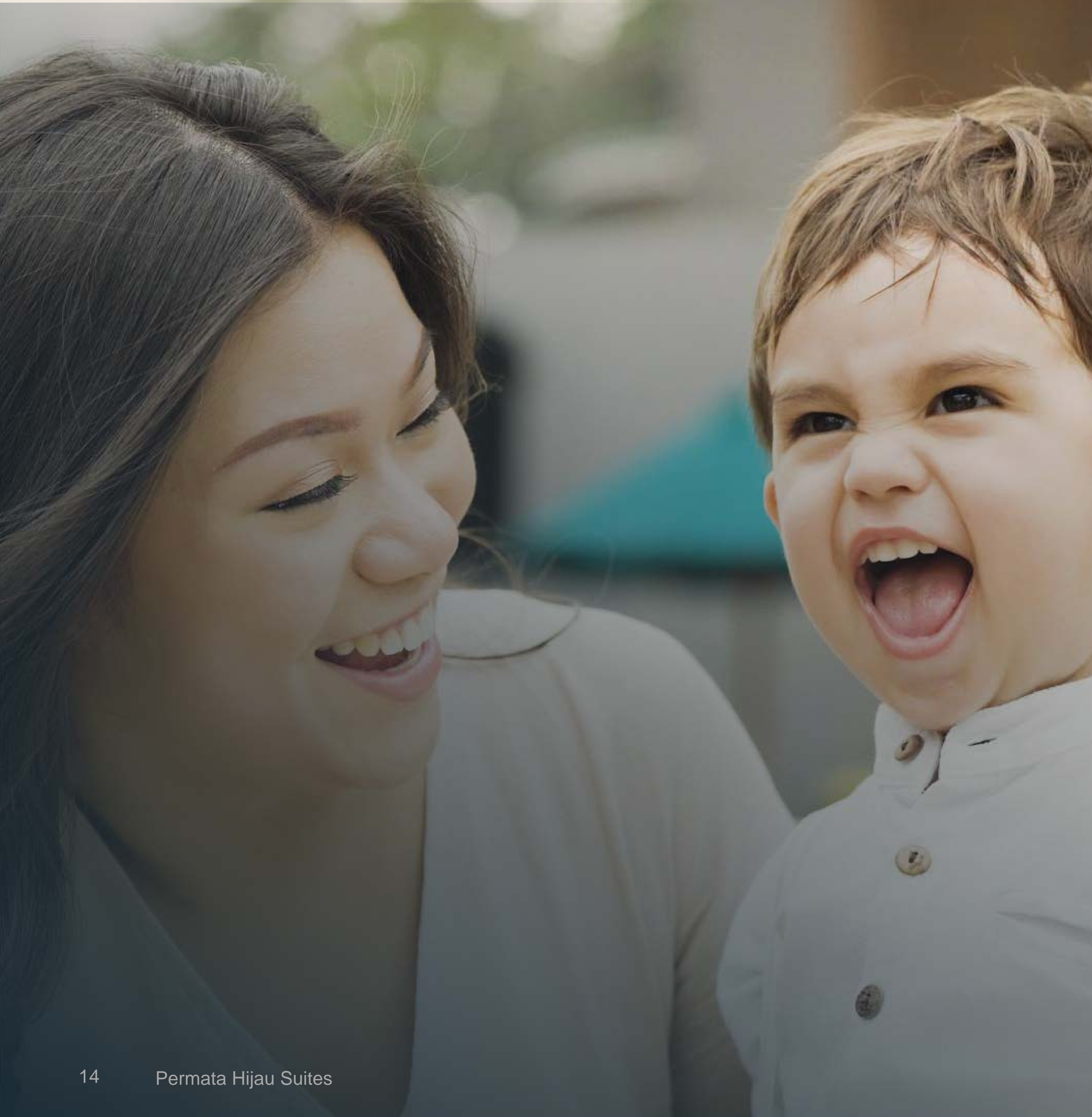
3,6 KM — GANDARIA CITY

4,0 KM — CENTRAL PARK & MTA

4,7 KM — GI & PLAZA INDONESIA

5,9 KM — PONDOK INDAH MALL

6,1 KM — MALL PURI INDAH



Surrounded by International School & Universities

70 M — ETON HOUSE Int. Pre School

1,2 KM — BINUS University

2,3 KM — BINUS International

2,4 KM — BINUS School – Simprug

4,5 KM — Playfield Kid's Academy



Direct View to GBK Senayan

Permata Hijau Suites

Prestigious Atmosphere

The embodiment of positive powers of calmness, happiness, health, peace, glory and prosperity.

- Ebony & Ivory Tower
- 9000 sqm area (Building Rights Title)
- Strata Title Certificate

649 units

36 Floors, Only 10
Units in every floor

Exclusive

Marble Floor
Air Conditioner
Balcony on every unit

4 floors

Basement & podium
parking space



Nature

Inspired Facilities

A place inspired by the essence of nature, expressing the harmony of life.

- Grand Lobby
- Spa, Sauna, Jacuzzi
- Club Lounge & Private Dining Hall
- Gym & Fitness Centre
- Library
- Aquatic Gym Pool
- Aquatic Reflexology Path
- Whirlpool
- Yoga & Pilates Area
- Alfresco, Outdoor Sitting Area
- Jogging Track
- Children Playground
- Basket Ball 3 on 3 Court
- Infinity Pool
- Plaza & BBQ Area
- Daycare (Collaboration with EtonHouse & Playfield Kid's Academy)





Outdoor seating area



Alfresco



3 on 3 basketball court

Jogging Track



Daycare manage by
ETONHOUSE & Playfield Kid's
Academy



Reflexology Path





Fitness & Gym Area



Aquatic Gym Pool



Yoga & Pilates Area



Library

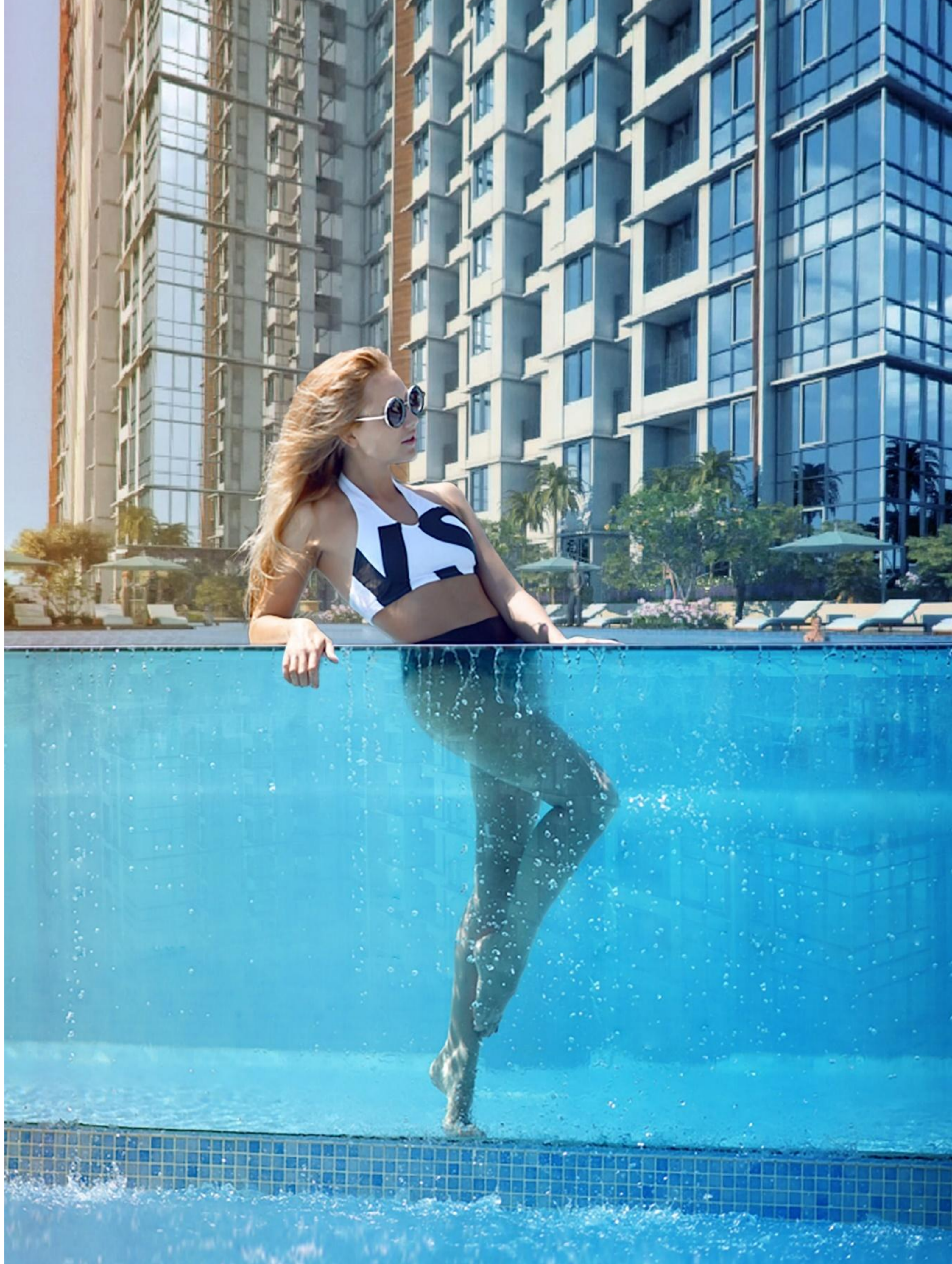


Jacuzzi



Bbq Area & Plaza





Be an **ICON** everyday

Our infinity pool is designed to cater your needs of relaxation, health, lifestyle and safety.

The ladies pool is walled by glass, directly connected to your kiddies pool, so your child could see you during their playtime and vice versa.

Infinity Pool with Glass Wall





Leave your love one without worries. Our Daycare managed by ETONSCHOOL and Playfield Kid's Academy will cater of their needs during the day and you could pick them up afterward.

Professionally managed by



Leave Them Without Worry

LEGEND

- A. AQUATIC GYM POOL
- B. AQUATIC REFLEXOLOGY PATH
- C. AQUATIC MASSAGE POOL
- D. POOL DECK
- E. YOGA & PILATES AREA
- F. ALFRESCO
- G. OUTDOOR SEATING AREA
- H. JOGGING TRACK
- I. PEDESTRIAN
- J. CHILDREN PLAYGROUND
- K. INFINITY POOL

JL. KEBAYORAN LAMA

City View : Binus University, Kedoya, Puri Indah, Kebon Jeruk, Mall Taman Angrek, Neo SOHO, Gramedia & Kompas Tower



City View : Gelora Bung Karno, Hotel Mulia, Senayan Area, SCBD, Jend. Sudirman, Semanggi, Pakubuwono



Retail, Alfresco & Outdoor Seating Area

Permata Hijau Suites



Amazing City Skyline from Barbeque Area & Plaza

Permata Hijau Suites



Green Facilities Landscape, Children Playground, Alfresco and 3 on 3 Basketball Court

Permata Hijau Suites



Secluded Apartment Grand Lobby

Permata Hijau Suites



Grand Lobby

Permata Hijau Suites



Grand Lobby

Permata Hijau Suites



Grand Lobby

Permata Hijau Suites



Grand Lobby

Permata Hijau Suites



Grand Lobby

Permata Hijau Suites



Integrated Green Facilities Landscape : Aquatic Gym Pool, Aquatic Reflexology Path, Whirlpool, Yoga & Pilates Area, Alfresco, Outdoor Seating Area, Children Playground, Mini Skatepark, Jogging Track



Infinity Pool, Ladies Pool, Leisure Pool & Kiddies, Sunken Lounge, Gazebo & Cabana, Plaza & BBQ Area

Permata Hijau Suites



Greet The Morning City Each Day from Your Window

Permata Hijau Suites



Infinity Pool, Ladies Pool, Leisure Pool, Sunken Lounge, Gazebo & Cabana



Enjoy Your Amazing —“M Time” Everyday

Permata Hijau Suites



Infinity Pool Water Curtain

Permata Hijau Suites



Club Lounge

Permata Hijau Suites



Club Lounge

Permata Hijau Suites



Club Lounge

Permata Hijau Suites



Club Lounge

Permata Hijau Suites



Gym & Fitness Center

Permata Hijau Suites



Gym & Fitness Center

Permata Hijau Suites



Gym & Fitness Center

Permata Hijau Suites



Private Dining Hall

Permata Hijau Suites



Private Dining Hall

Permata Hijau Suites



Private Dining Hall

Permata Hijau Suites



Private Dining Hall

Permata Hijau Suites



Private Dining Hall

Permata Hijau Suites

The Orchestra
**Of Modern
Lifestyle &
Natural Living**
in Every Corner



One Bedroom Unit

1 Bedroom A

Nett. Area : 35.01 sqm
Semigross : 40.86 sqm



1 Bedroom B

Nett. Area : 35.01 sqm
Semigross : 40.86 sqm

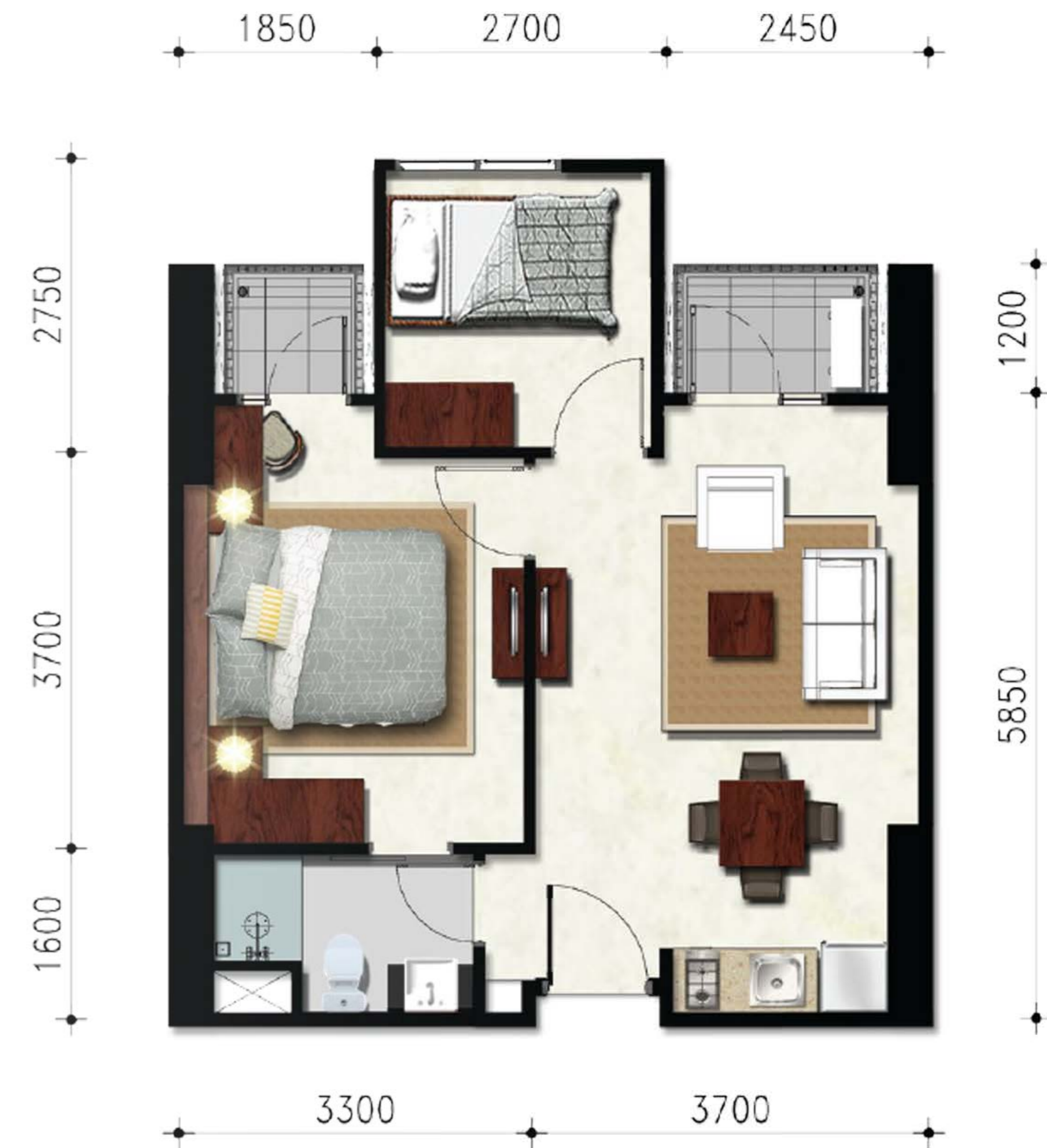




Two Bedrooms Unit

2 Bedrooms A

Nett. Area : 51.66 sqm
Semigross : 60.29 sqm



2 Bedrooms B

Nett. Area : 51.66 sqm
Semigross : 60.29 sqm



2 Bedrooms C

Nett. Area : 59.46 sqm
Semigross : 69.39 sqm

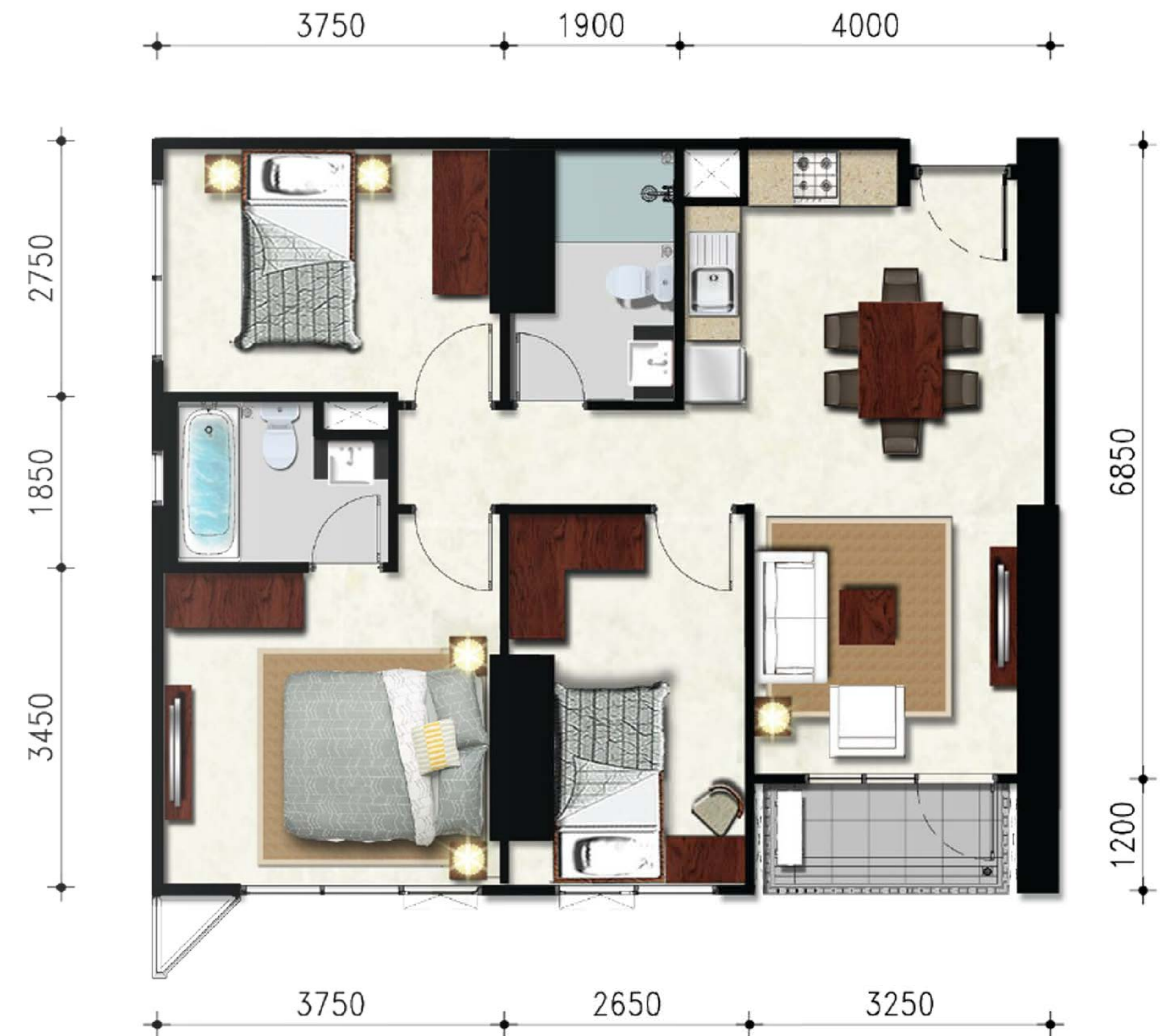




Three Bedrooms Unit

3 Bedrooms A

Nett. Area : 78.56 sqm
Semigross : 91.69 sqm



3 Bedrooms B

Nett. Area : 78.32 sqm
Semigross : 91.40 sqm



3 Bedrooms C

Nett. Area : 78.32 sqm
Semigross : 91.40 sqm



Specifications

MAIN DOOR : Solid Engineering Door
WINDOWS : Powder Coating Aluminium Frame with Glass
CEILING : Gypsum Board

FLOOR UNIT :

Master Bedroom	: Marble
Bedroom	: Marble
Living Room	: Marble
Dining Room	: Marble
Bathroom	: Homogeneous Tile
Balcony	: Ceramic

KITCHEN : Kitchen Table with Single Bowl

BATHROOM
Water Heater : 1 Outlet Installation
Sanitary : TOTO

PHONE : 1 Outlet Installation
TV : 1 Outlet Installation

AIR CONDITION ER : 1BR = 2 Units
: 2BR = 3 Units
: 3BR = 4 Units

ELECTRICITY : 1BR = 3.500 VA
: 2BR = 4.400 VA
: 3BR = 6.600 VA



Combo Units

(2BR+1BR / 2BR+2BR / 2BR+3BR)

Why Combo Units ?

- Create your own spacious unit,
- Choose between Combo 2Br + 1 BR, 2BR + 2 BR or 2BR + 3 BR,
- Value for money, benefit you more in price, investment and space,
- Get the benefit by choosing combo unit, 101, 15 sqm of living space compared to 91,4 sqm on standard 3Br unit,
- Spacious yet flexible 2 extra rooms for your convenience and privacy,
- 2 certificates,
- Limited stock.



9 Reasons to Choose Permata Hijau Suites

- Hot price with doubled profits, solid capital gain & yield,
- Prime location at the heart of South Jakarta,
- Easy access to lifestyle centers,
- Surrounded by public facilities, international standard schools & universities,
- Impressive real panoramic city view,
- Private balcony for every unit,
- Compact size with premium quality,
- Luxurious facilities,
- Trusted developer : PULAU INTAN DEVELOPMENT, Terry Palmer Group & Ateja Group.



The HOTTEST Price In South Jakarta

“ MULAI 28 JUTA-AN/M² “

1BR — 1,2M-AN*

2BR — 1,7M-AN*

3BR — 2,6M-AN*

(EXCLD PPN)





PERMATA HIJAU SUITES

Living in Perfect Harmony

021 - 53669600

Marketing Gallery Permata Hijau Suites
Jl. Raya Kebayoran Lama No. 55,
Kebayoran Lama, Jakarta Selatan 12210

Thank You